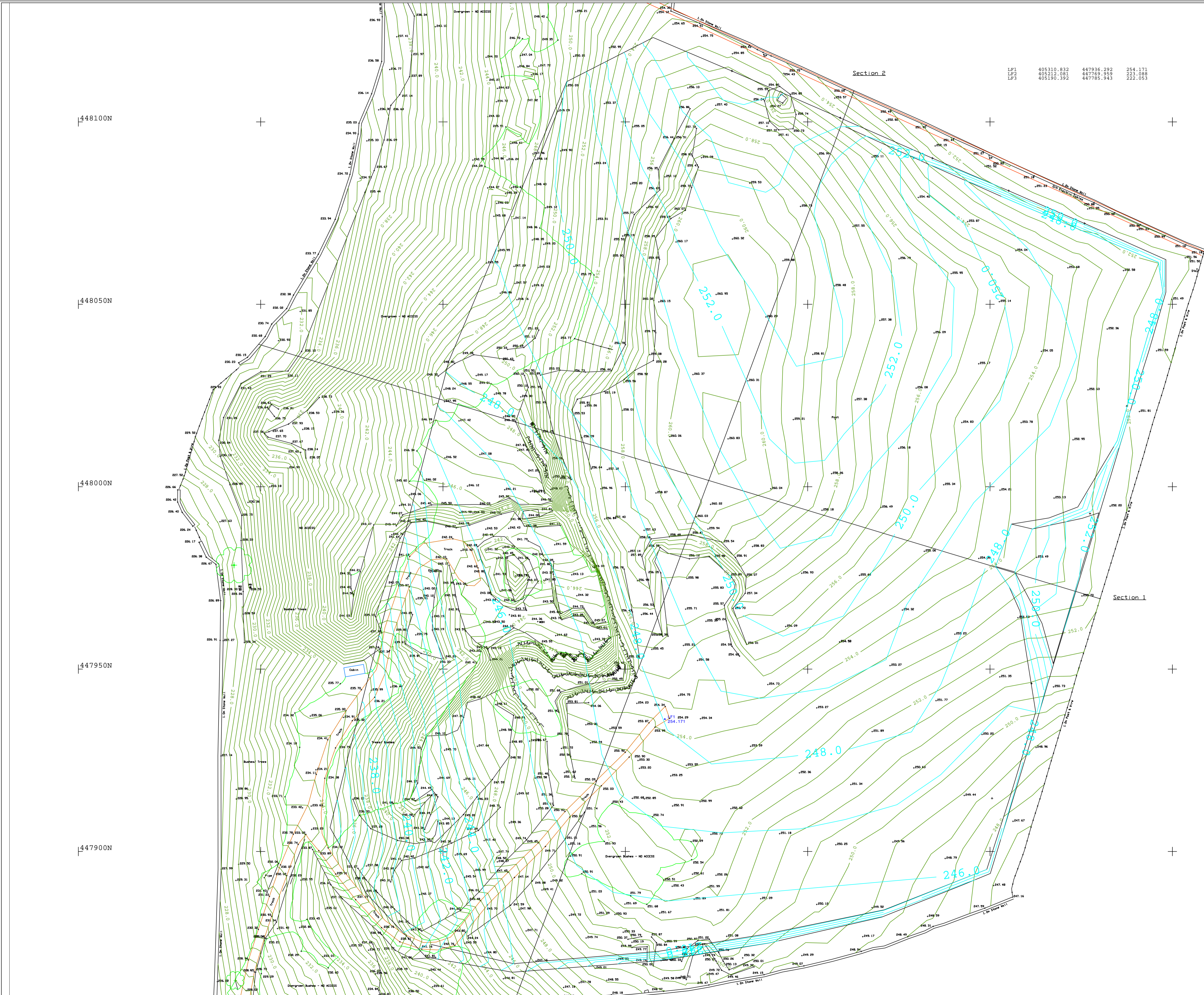


LP1 405310.832 447936.292 254.171
 LP2 405212.081 447769.959 223.088
 LP3 405190.392 447785.943 222.053



Boundary Type and Description

| | | |
|--|------------|----------------------|
| | C/B | Close Board |
| | C/L | Chain Link |
| | FE | Misc. |
| | K/R | Knee Rail |
| | O/B | Open Board |
| | Pal | Palisade |
| | M/R | Metal Railings |
| | Pick | Picket |
| | P/R | Post & Rail |
| | P/W | Post & Wire |
| | W/M | Wire Mesh |
| | Brick | Brick Wall |
| | Brick Ret. | Brick Retaining Wall |
| | Stone | Stone Wall |
| | Stone Ret. | Stone Retaining Wall |
| | Block | Block Wall |
| | Misc. | Misc. Wall |
| | | Gate |

Vegetation

| | |
|--|----------------|
| | Hedge |
| | Edge of Hedge |
| | Edge of Canopy |
| | Tree and Trunk |
| | Stump |
| | Bush |
| | Verge |

General Utility Linestyles

| | | |
|--|-----------------|-----------------------|
| | CD | Drainage Combined |
| | FD | Drainage Foul |
| | SD | Drainage Surface |
| | UD | Drainage Unidentified |
| | O/Head Combined | O/Head Combined |
| | O/E | O/Head Electric |
| | O/Head Lines | O/Head Lines |
| | O/Head Telecom | O/Head Telecom |

General Survey Abbreviations

| | | | |
|------|-----------------------|------|-----------------------|
| AV | Air Valve | GV | Gas Valve |
| BH | Borehole Collar | HP | Hand Pit |
| IBO | Box (General) | IBO | Illuminated Bollard |
| IC | Inspection Cover | IC | Inspection Cover |
| IL | Invert Level | IL | Invert Level |
| IP | Lampost | IP | Lampost |
| LT | Light | LT | Light |
| MH | Manhole | MH | Manhole |
| MR | Marker | MR | Marker |
| POST | Post (General) | POST | Post (General) |
| PB | Post Box | PB | Post Box |
| RE | Road Sign | RE | Road Sign |
| RS | Road Sign | RS | Road Sign |
| SV | Stop Valve | SV | Stop Valve |
| TL | Traffic Light | TL | Traffic Light |
| TFR | Taken From Records | TFR | Taken From Records |
| TP | Telecom Pole | TP | Telecom Pole |
| TV | Cable TV | TV | Cable TV |
| UTGA | Unable to Gain Access | UTGA | Unable to Gain Access |
| UTL | Unable to Lift | UTL | Unable to Lift |
| UTS | Unable to Survey | UTS | Unable to Survey |
| UTT | Unable to Trace | UTT | Unable to Trace |
| WL | Water Level | WL | Water Level |
| WS | Window Sample | WS | Window Sample |

Measured Survey Abbreviations

| | | | |
|-----|----------------------|-----|---------------------------|
| AC | Air Conditioning | SCH | Structural Ceiling Height |
| AH | Access Hatch | SKY | Sky Light |
| AP | Access Panel | W | Window Height |
| BH | Beam Height | | |
| C | Cill Height | | |
| DH | Door Height | | |
| FCH | False Ceiling Height | | |
| FL | Floor Level | | |
| HT | Height (General) | | |
| RD | Radiator | | |

CO-ORDINATES AND ELEVATIONS ARE SET BY GNSS AT STATION LP1.
 CO-ORDINATES ARE TO OS NATIONAL GRID USING OSTN15 TRANSFORMATION
 LEVELS ARE TO ORDNANCE DATUM USING OSGM15 GEOD MODEL.
 THE REMAINDER OF THE SURVEY IS TO SCALE FACTOR 1 PLANE GRID.

This drawing is the property of Landform Surveys Ltd.
 Copyright is reserved by them and the drawing is issued on the condition
 that it is not copied either wholly or in part without the
 consent of Landform Surveys Ltd.
 Accuracies are commensurate with the stated scale of the survey.



| | | | | |
|-----|----|------|-------|-------|
| rev | by | date | notes | check |
| | | | | |

Landform Surveys
 professional surveying solutions
 Suite 18, YBN, Delta Bank Road, Gateshead, NE11 9DJ
 Tel: 0191 2765636
 e: office@landform-surveys.co.uk www.landform-surveys.co.uk

CLIENT
The Mineral Planning Group Ltd
 Horn Crag Quarry

TITLE
Restoration Contours Design

| | | | | | | | |
|------------|----|------|----------|------------|----------|-------|-------|
| Drawn | UH | Date | 17-11-23 | Drawing No | | Scale | |
| Checked | DH | Date | 17-11-23 | | | | |
| Client Ref | | | | | E454-005 | | 1/500 |